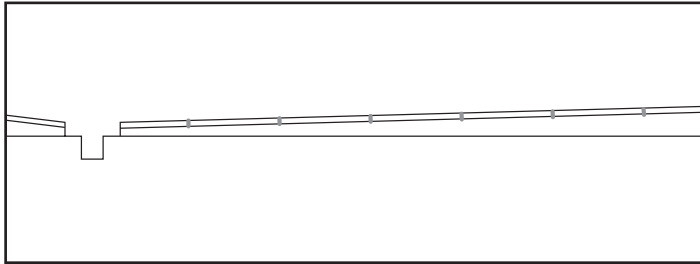
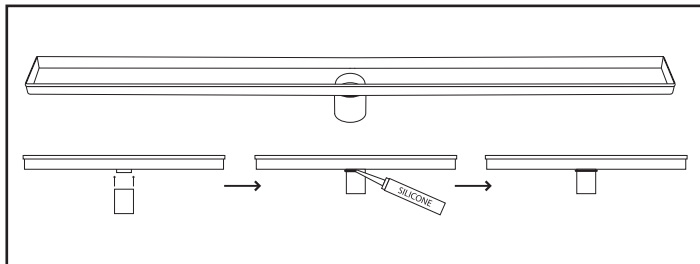


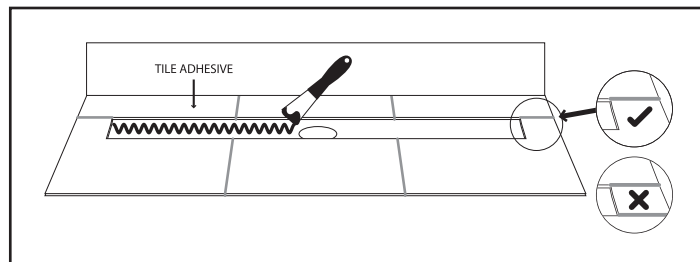
Channel Drain Installation Guide



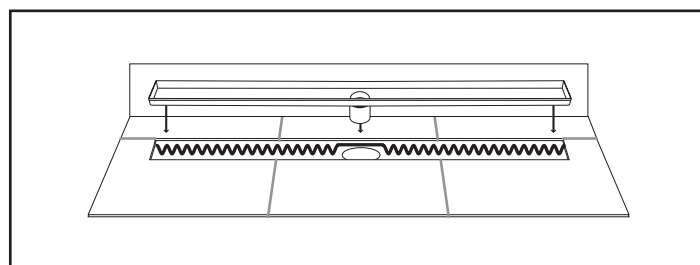
- 1 Check that the fall in the shower floor is as per specification ie 1% - 10mm: 1000mm.
- 2 Ensure that an appropriate flange has been attached to the waste pipe in the floor.
- 3 Ensure that the shower floor and recess for the channel drain have been waterproofed up to and over the lip edge of the flange.



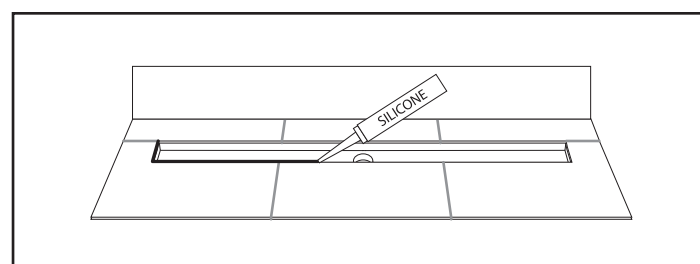
- 4 Attach a stainless steel spigot to the channel and lock in position. Create a water-tight seal with silicone sealant and allow to cure.



- 5 Apply an appropriate amount of tile adhesive or silicon to the channel cut-out.

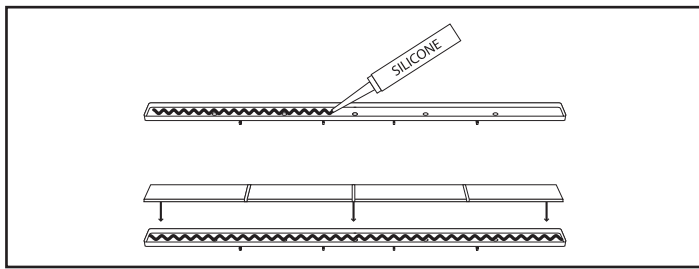


- 6 Lower the channel insert into the channel cut-out and allow to cure.

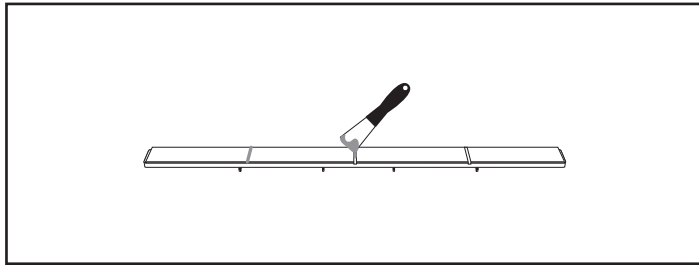


- 7 Seal around the perimeter of the channel insert (where the channel insert and tiles meet) with silicone sealant and allow to cure.
- 8 Place the grating of the channel into the trough.

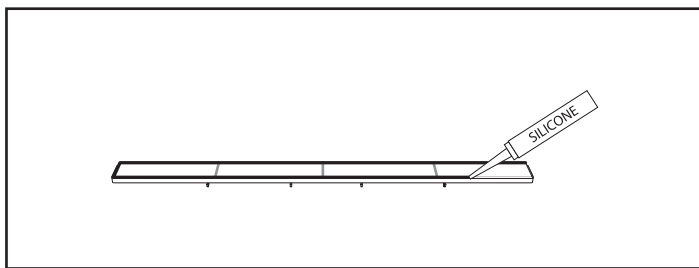
For Tile Insert Grating



- 1 Glue tiles into the tile insert using silicone and allow to cure.



- 2 Once the tiles have been glued in place, grout the tile joints and allow to cure.



- 3 Seal around the perimeter of the tile insert (where the tile insert and tiles meet) with silicone sealant and allow to cure.

For more information about the Tranquillity Bathroom Collection & our range of products visit www.tbw.co.nz