

single bars

installation instructions

tranquillity
bathroom collection

DESCRIPTION

The single bar rails are individual heated bars installed in a 'landscape' direction, one on top of the other to create an aesthetic floating 'ladder' feature in the bathroom.

SPECIFICATIONS

ROUND



RHS hardwired

Model	Voltage	Width	Depth
PRB45	12 volts	450mm	110mm
PRB60	12 volts	600mm	110mm
PRB85	12 volts	850mm	110mm

LHS hardwired

Model	Voltage	Width	Depth
PRB45-L	12 volts	450mm	110mm
PRB60-L	12 volts	600mm	110mm
PRB85-L	12 volts	850mm	110mm

SQUARE



RHS hardwired

Model	Voltage	Width	Depth
PSB45	12 volts	450mm	110mm
PSB60	12 volts	600mm	110mm
PSB85	12 volts	850mm	110mm

LHS hardwired

Model	Voltage	Width	Depth
PSB45-L	12 volts	450mm	110mm
PSB60-L	12 volts	600mm	110mm
PSB85-L	12 volts	850mm	110mm

FEATURES

- 6mm drill bit included.
- High temperature silicone cable is recommended for wiring from transformer

INSTALLATION

This appliance must be installed as prescribed by the relevant wiring rules and regulations, including the regulations covering installation of appliances and accessories in 'wet areas' such as bathrooms, showers and laundries. Installation should be in accordance with AS/NZS 3000:2007.

An accessible isolation switch is required in the fixed wiring.

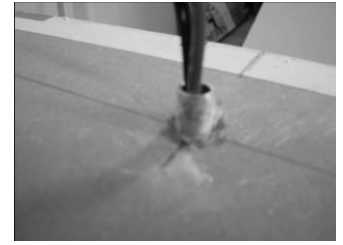
The fixing bracket should be mounted vertically with the cord exiting from each bracket mount. This should be positioned at least 600mm above the floor from bottom bracket.

- Assemble and wire the In-Wall Fixing System as shown in the pictures. The single bars are designed to be fixed to a timber stud frame set back 10mm from un-sheeted stud.



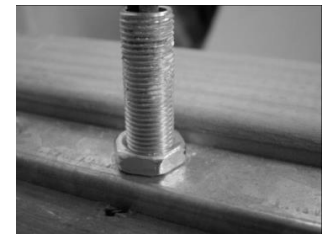
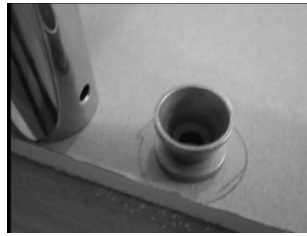
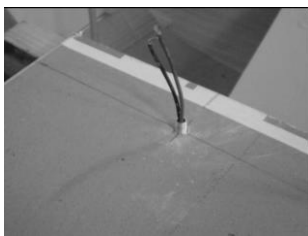
TILED/RENDERED MASONRY WALLS

- Prior to tiling, cut a slot into the rendered surface so nut finishes flush with rendered surface.
- Fit the In-wall Fixing System into the slot using screws and plugs supplied.



SHEETED WALLS

- Before fitting the sheeted surface, drill holes to suite the spacing of the spigots.
- Above installations must make the spigots protrude through the finished surface by at least 15mm and ensure the thread stays free of tile cement by taping exposed threads.
- Mark left hand fixing brackets, ensuring rails are level. Drill holes with 6mm bit supplied.
- Put the Single bars on the two parallel spigots, then place a screw in the hole of the bottom of the single bar, and tighten it with the Allen key.



SAFETY INFORMATION

As with any electrical appliance, you should be aware of the basic safety precautions when using this heated towel rail. Please read these instructions, and file them for future reference.

- This appliance is not to be used by persons (including children) with reduced physical, sensory or mental capabilities, or lack of experience and knowledge, unless they have been given supervision or instruction.
- Because this appliance gets hot, young children and infirm people should be closely supervised when nearby. Children should be supervised to ensure that they do not play with the appliance.
- Be aware that the towel rail will get slightly hotter than normal during warmer weather and when insulated by towels.
- Install the towel rail at least 100mm away from all permanent objects in the surrounding area. A minimum spacing of 80mm must be observed between two adjacent rails.
- **WARNING:** In order to avoid a hazard for very young children, this appliance should be installed so that the lowest heated rail is at least 600mm above the floor.
- Means for disconnection must be incorporated in the fixed wiring in accordance with the wiring rules.
- The rail should NOT be used for anything other than its intended use.
- It would be very dangerous to put the towels or anything else which has been in contact with hazardous liquids on this towel rail.
- The appliance must only be supplied at safety extra low voltage corresponding to the marking on the appliance. Use this appliance only on the voltage specified on the instruction.
- Electrical work should only ever be done by authorised persons.
- Do NOT immerse the towel rail in any liquid.
- Make sure the supply cord never touches heated surfaces.
- If the electrical cord or connection is damaged DO NOT attempt to repair; please contact the supplier.

WARNING! Do not overload the transformer provided.